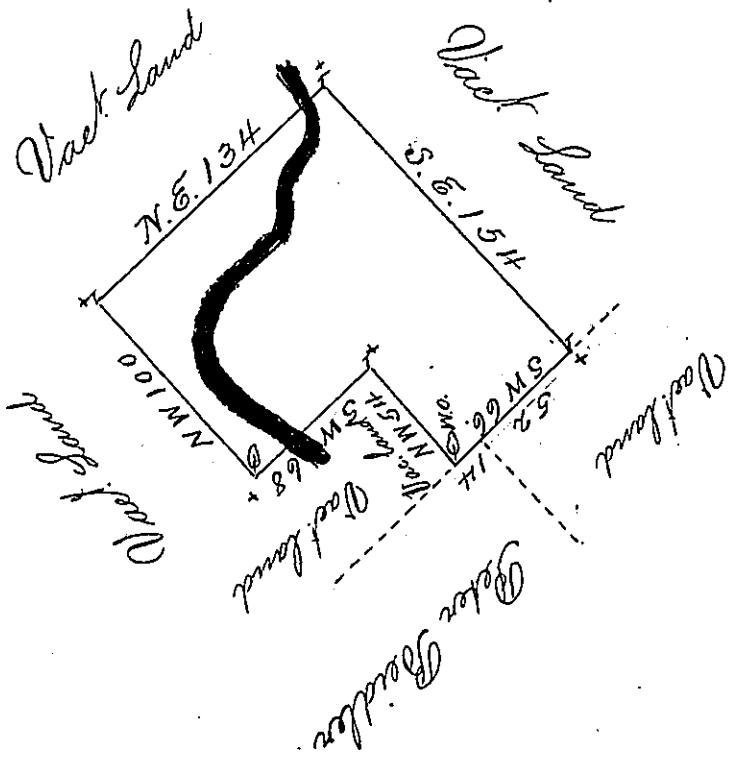


13400  
 3564  
 16964

66  
 54  
 264  
 330



By Virtue of a Warrant from the Proprietaries dated the Eighth day of May 1734 Surveyed unto ~~Christ~~<sup>ian</sup> Beidler a tract of Land Situate <sup>at Comissippin</sup> on a branch of Perkiome in the County of Philad<sup>a</sup> Beginning at a white oak in line of Peter Beidler's land thence by Vacant Land North West fifty four perches to a post thence by Vacant Land South West sixty eight perches to a hickery thence by Vacant land North West one hundred perches to a post thence by Vacant land North East one hundred and thirty four perches to a post thence by Vacant Land South East one hundred and fifty four perches to a post thence by Vacant land <sup>S.W.</sup> fifty two perches and by The s<sup>r</sup> Peter Beidler the same Course fourteen perches to the place of Beginning Containing one hundred acres with the usual Allowance of Six p cent Surveyed Septem<sup>r</sup> 6 1734.

By Nich<sup>l</sup> Scull

IN TESTIMONY that the above is a copy of the original remaining on file in the Department of Internal Affairs of Pennsylvania, made conformably to an Act of Assembly approved the 16th day of February, 1833, I have hereunto set my Hand and caused the Seal of said Department to be affixed at Harrisburg, this Seventh day of January 1902.

*James Latta*  
 Secretary of Internal Affairs.